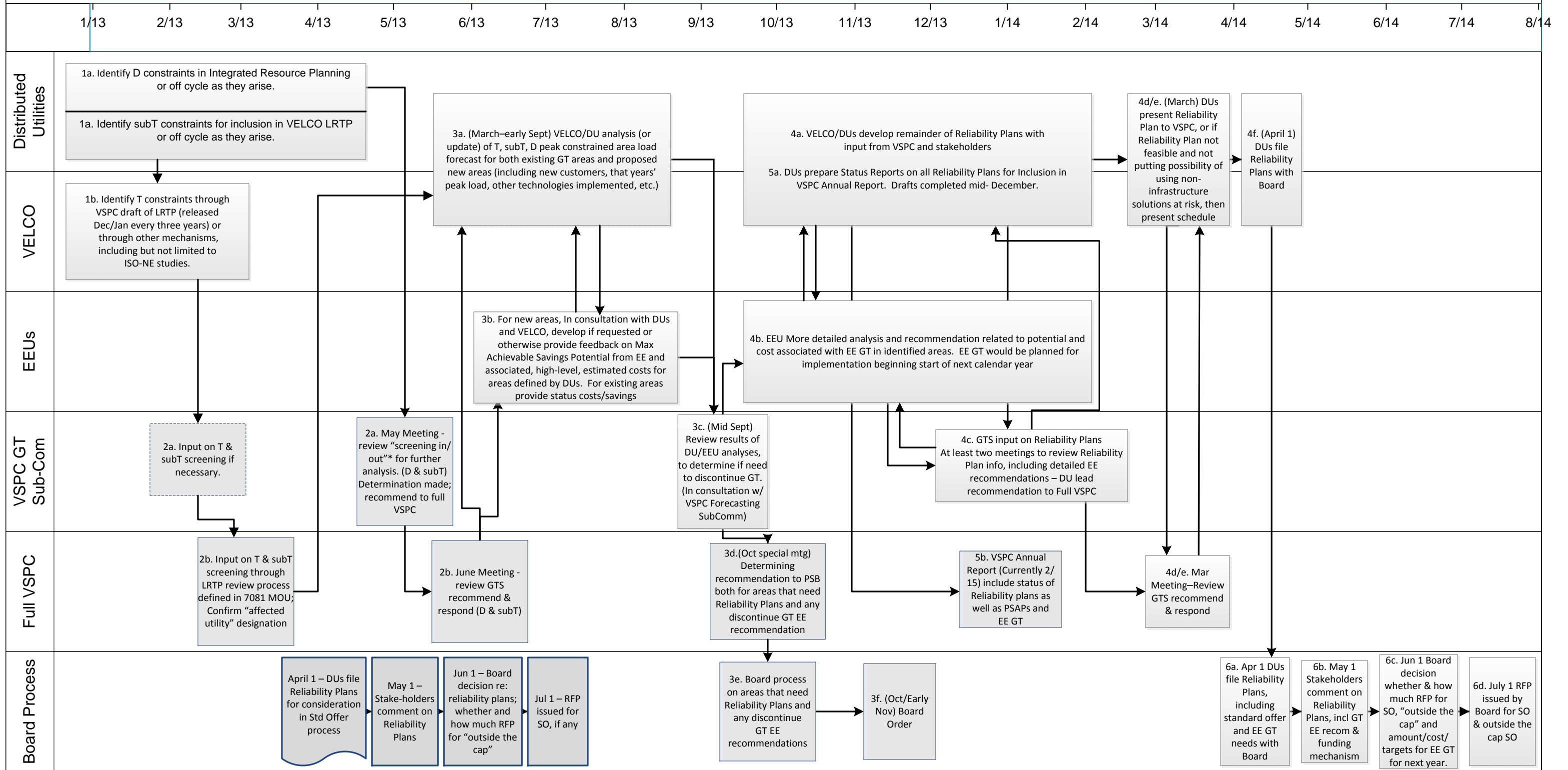


Geotargeting Process Map – Draft 8.15.13



*Screening" refers to the use of the Docket 7081 screening tool for bulk and predominantly bulk transmission and the Docket 6290 screening tool for subtransmission and distribution issues to determine their potential to be resolved through energy efficiency and/or alternatives such as generation or demand response (or a hybrid of transmission with efficiency and/or generation). An issue is "screened in" if it has potential for a non-wires solution and therefore requires a Reliability Plan, and "screened out" if no potential is found and, therefore, no Reliability Plan is required.

Key to abbreviations

L RTP	VELCO Long-Range Transmission Plan
DU	distribution utility
GTS	VSPC Geotargeting Subcommittee
EE	energy efficiency
GT	geographic targeting
D	distribution
T	transmission (bulk/predominantly bulk)
subT	subtransmission (subsystem)