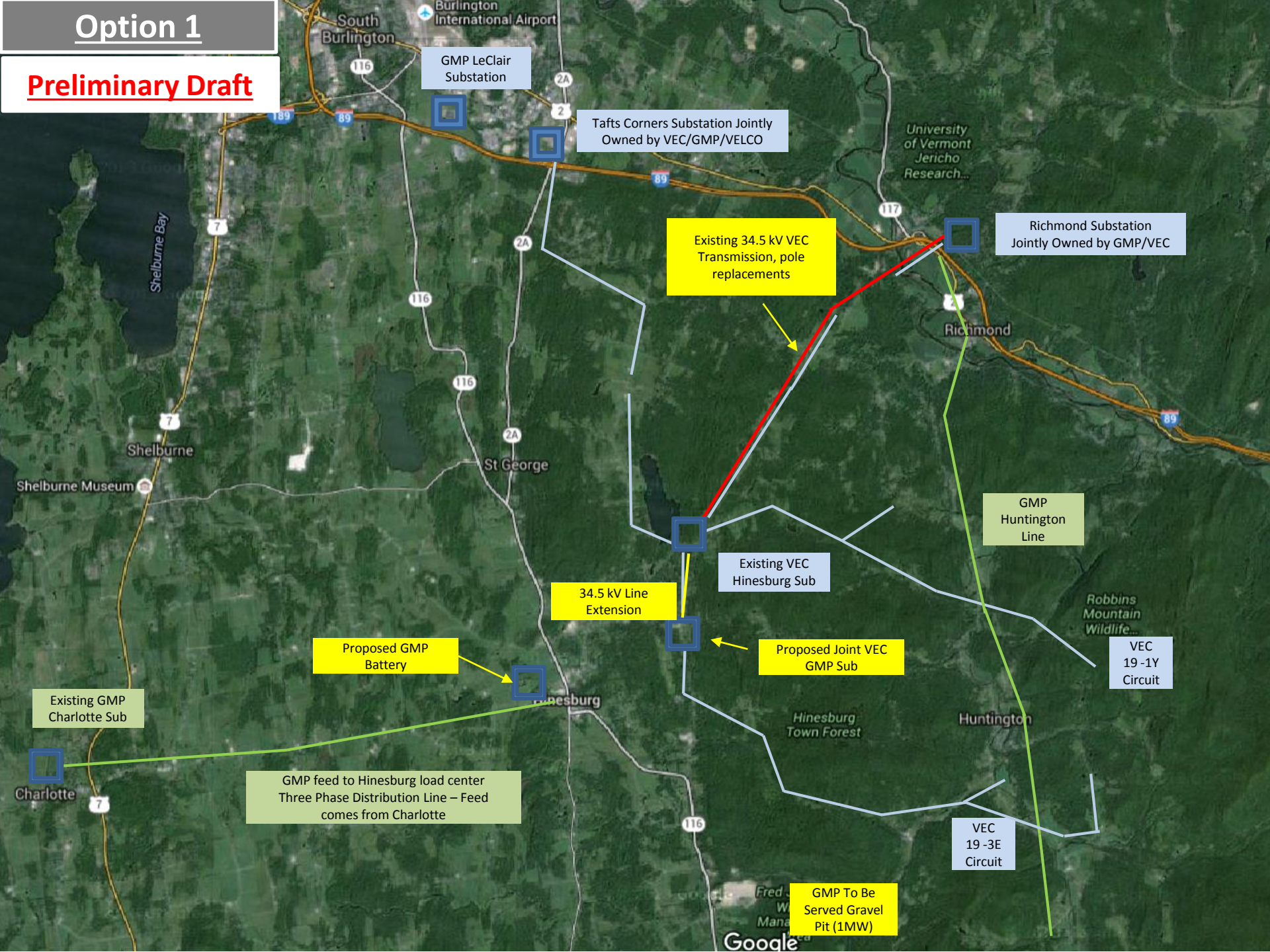


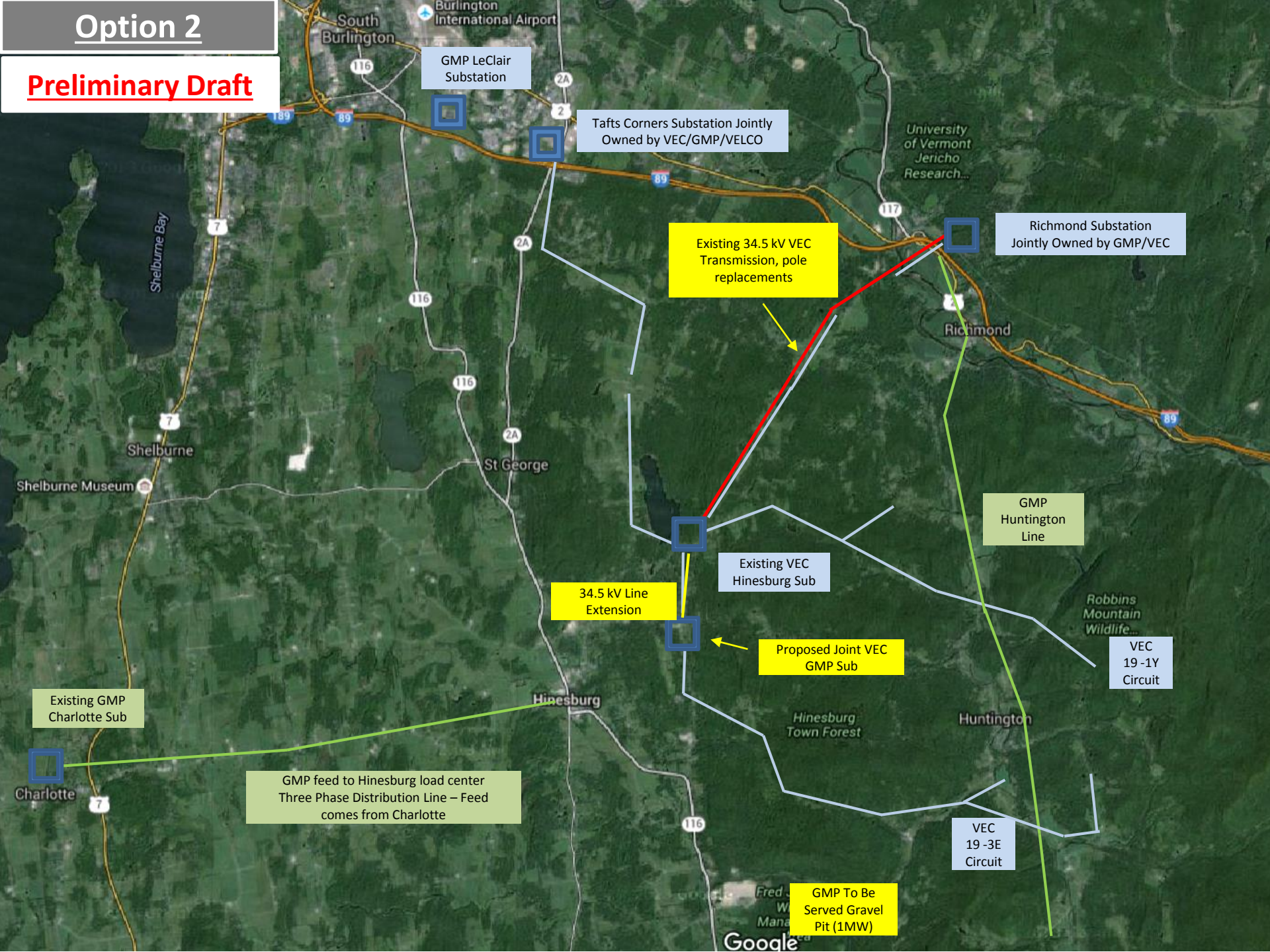
Option 1

Preliminary Draft



Option 2

Preliminary Draft



GMP LeClair Substation

Taft's Corners Substation Jointly Owned by VEC/GMP/VELCO

Richmond Substation Jointly Owned by GMP/VEC

Existing 34.5 kV VEC Transmission, pole replacements

34.5 kV Line Extension

Existing VEC Hinesburg Sub

GMP Huntington Line

VEC 19-1Y Circuit

Existing GMP Charlotte Sub

GMP feed to Hinesburg load center Three Phase Distribution Line – Feed comes from Charlotte

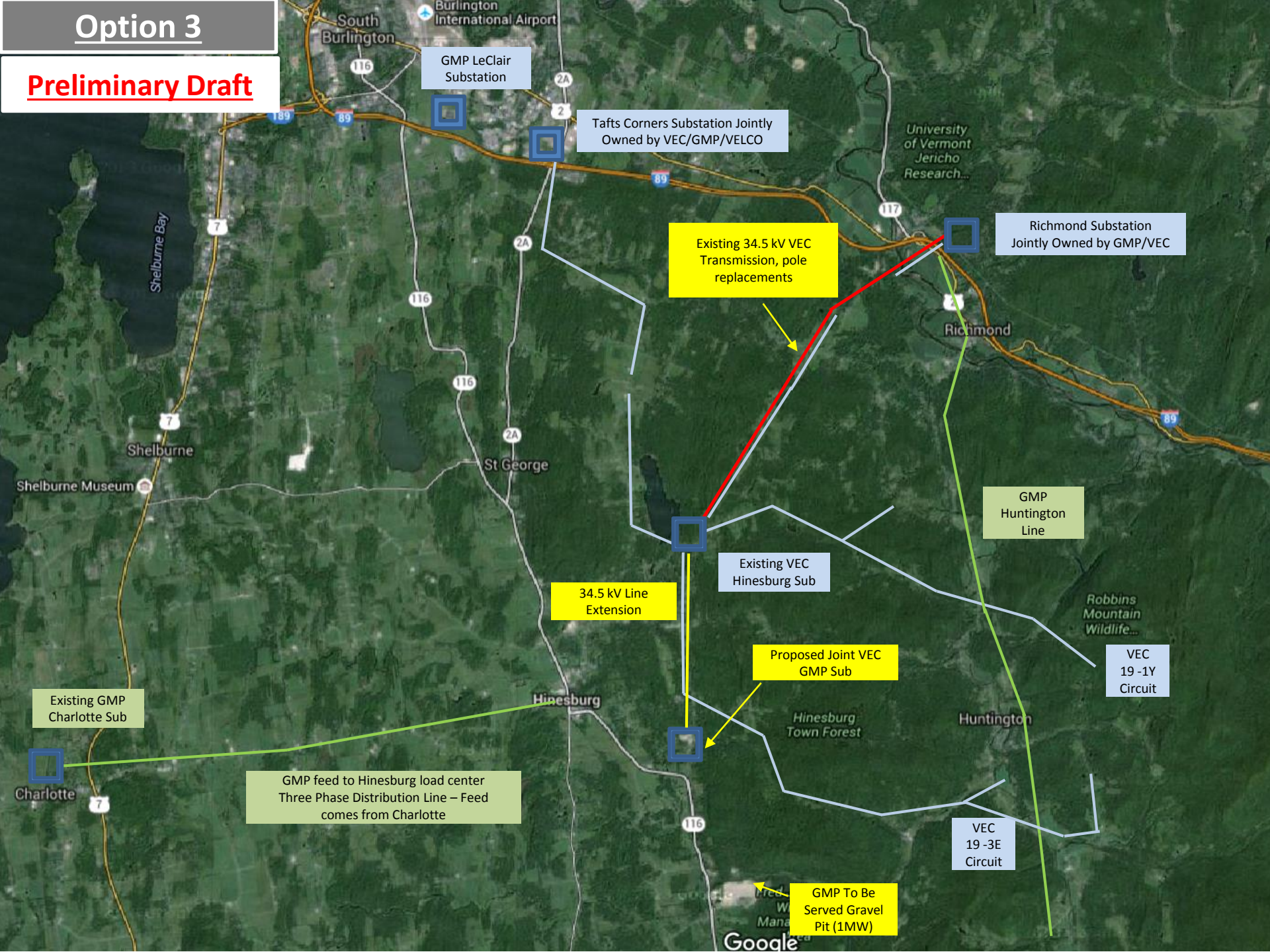
Proposed Joint VEC GMP Sub

VEC 19-3E Circuit

GMP To Be Served Gravel Pit (1MW)

Option 3

Preliminary Draft



GMP LeClair Substation

Tafts Corners Substation Jointly Owned by VEC/GMP/VELCO

Richmond Substation Jointly Owned by GMP/VEC

Existing 34.5 kV VEC Transmission, pole replacements

GMP Huntington Line

34.5 kV Line Extension

Existing VEC Hinesburg Sub

Proposed Joint VEC GMP Sub

VEC 19-1Y Circuit

Existing GMP Charlotte Sub

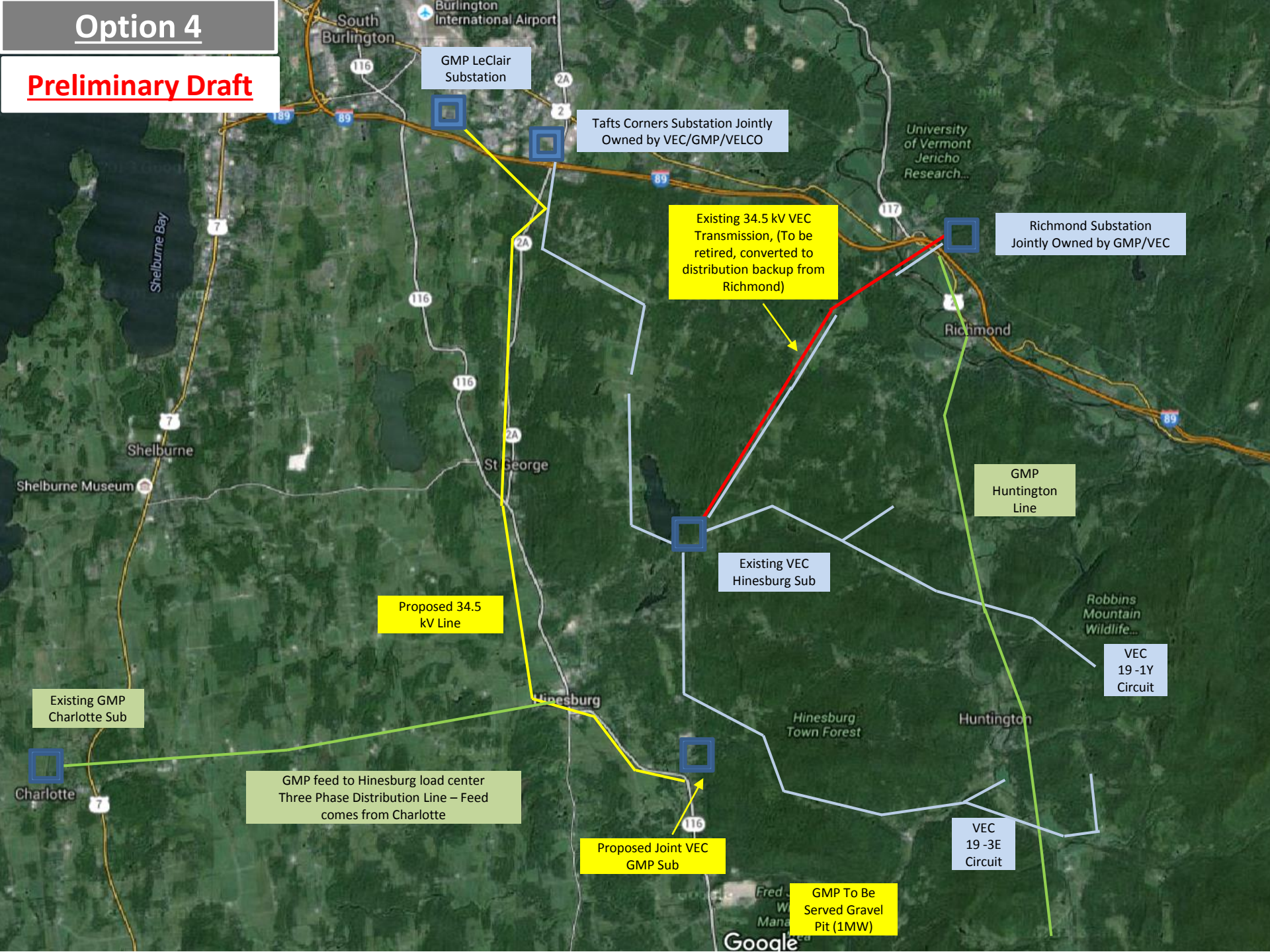
GMP feed to Hinesburg load center Three Phase Distribution Line – Feed comes from Charlotte

VEC 19-3E Circuit

GMP To Be Served Gravel Pit (1MW)

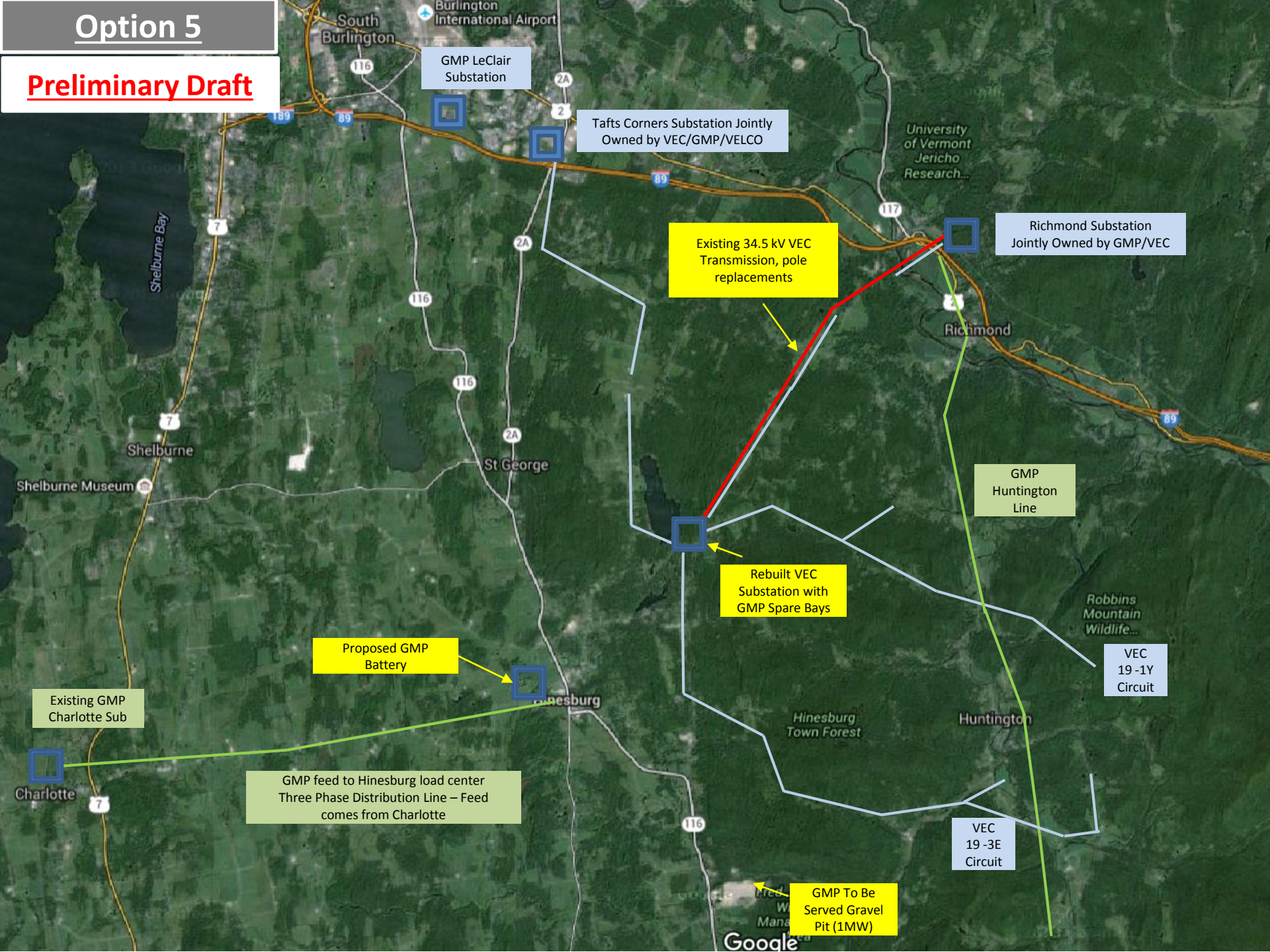
Option 4

Preliminary Draft



Option 5

Preliminary Draft



GMP LeClair Substation

Tafts Corners Substation Jointly Owned by VEC/GMP/VELCO

Richmond Substation Jointly Owned by GMP/VEC

Existing 34.5 kV VEC Transmission, pole replacements

GMP Huntington Line

Rebuilt VEC Substation with GMP Spare Bays

Proposed GMP Battery

VEC 19-1Y Circuit

Existing GMP Charlotte Sub

GMP feed to Hinesburg load center Three Phase Distribution Line - Feed comes from Charlotte

VEC 19-3E Circuit

GMP To Be Served Gravel Pit (1MW)