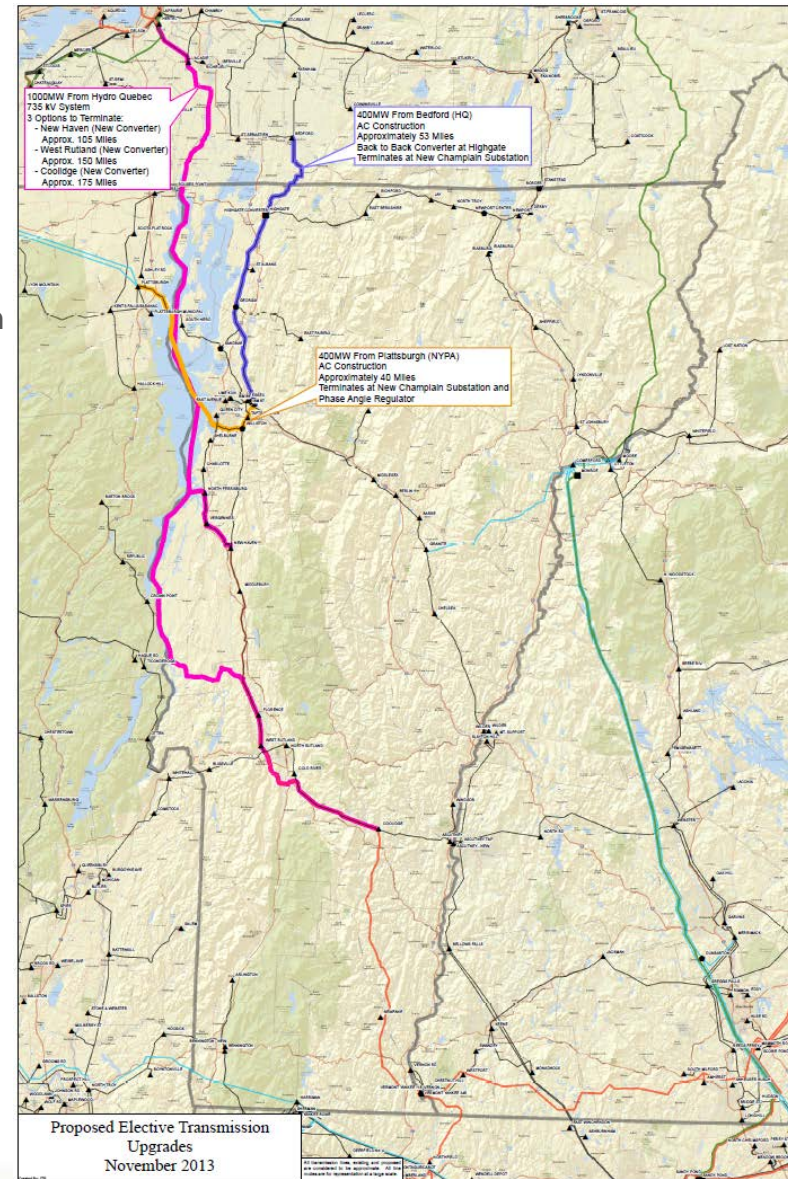


Active Interconnection Requests

Current Proposed Elective Transmission Upgrades (ETU)

1. NY-VT: **Grand Isle Intertie** (230kV AC - QP314)
 - **400 MW** Capacity
 - 230 KV Phase Angle Regulator-controlled Tie at a new Champlain Substation Site
 - Plattsburgh Substation upgrade
 - Submarine Cables (Lake Champlain) / underground or OH 230kV
 - Target In Service Date: 6/2017
2. HQ-VT: **New England Clean Power Link** (320kV DC - QP425)
 - **1,000 MW** Capacity
 - 320 DC Transmission Tie
 - AC/DC Converter connecting to HQ 75kV System
 - AC/DC Converter connecting to VT 345kV System
 - Target In Service Date: 12/2018
3. HQ-VT: **Highgate Expansion** (BTB Converter - TBD)
 - **425 MW** Capacity
 - 120/115kV Transmission Lines
 - Back to Back Converter Station
 - Target In Service Date: 06/2018



Additional slide for Kerrick Johnson presentation